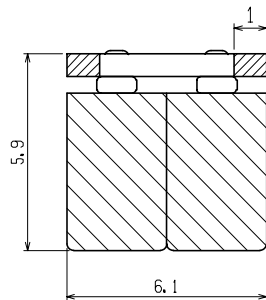
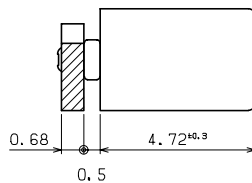
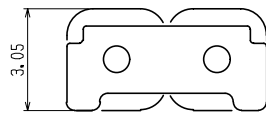
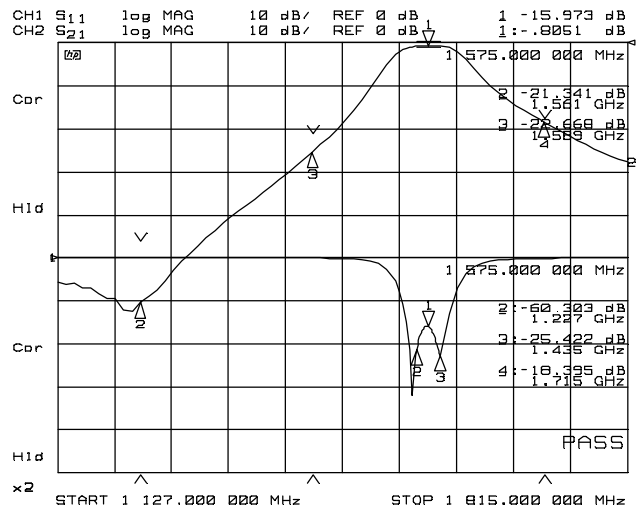
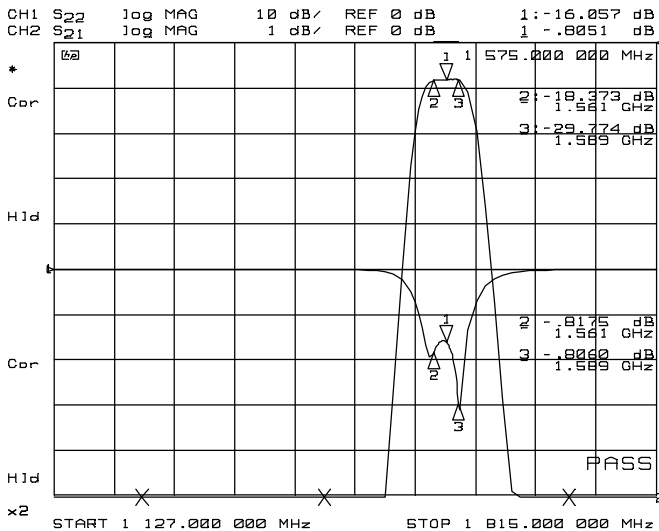


Title Dielectric Filter	Application Band Pass Filter for GPS	Document No. FS-038-01	Sheet 1/1
----------------------------	--	---------------------------	--------------

UBE P/N: **UF1575M115**

Center Frequency (Fo)	1575 MHz	(1561 to 1589 MHz)
Band Width	+/- 14 MHz	
Insertion Loss	0.82 dB	(1.2 dB max)
Ripple	0.10 dB	(0.5 dB max)
Return Loss	14.5 dB	(10.0 dB min)
Attenuation		
1227MHz	55.8 dB	(45.0 dB min)
Fo - 140MHz	24.0 dB	(20.0 dB min)
Fo + 140 MHz	18.9 dB	(17.0 dB min)

This catalog shows Typical Value [25°C]. The data in () show Specifications [-40°C ~ 85°C].



Units:mm
 ▨ : I/O
 ▨ : GND
 Tolerance ±0.2mm

Outside dimensions

Title Dielectric Filter	Application Band Pass Filter for GPS	Document No. FS-038-01	Sheet 2/2
----------------------------	---	---------------------------	--------------

